

# SGC Technologies Inc.

## Wireless and Internet Communications

### Head Office & Factory

212-2 Maeryoo-Ri, Neungseo-Myun, Yeosu-Kun, Kyungki-Do, Korea 469-810

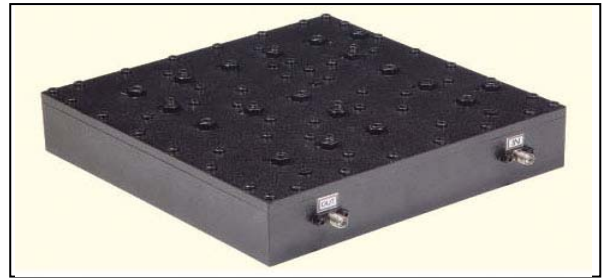
Tel:82-31-884-0236~8 Fax:82-31-884-0239

e-mail:sales@sgctech.co.kr web page: www.sgctech.co.kr

### Appearance

### Item : Cavity BPF for UMTS

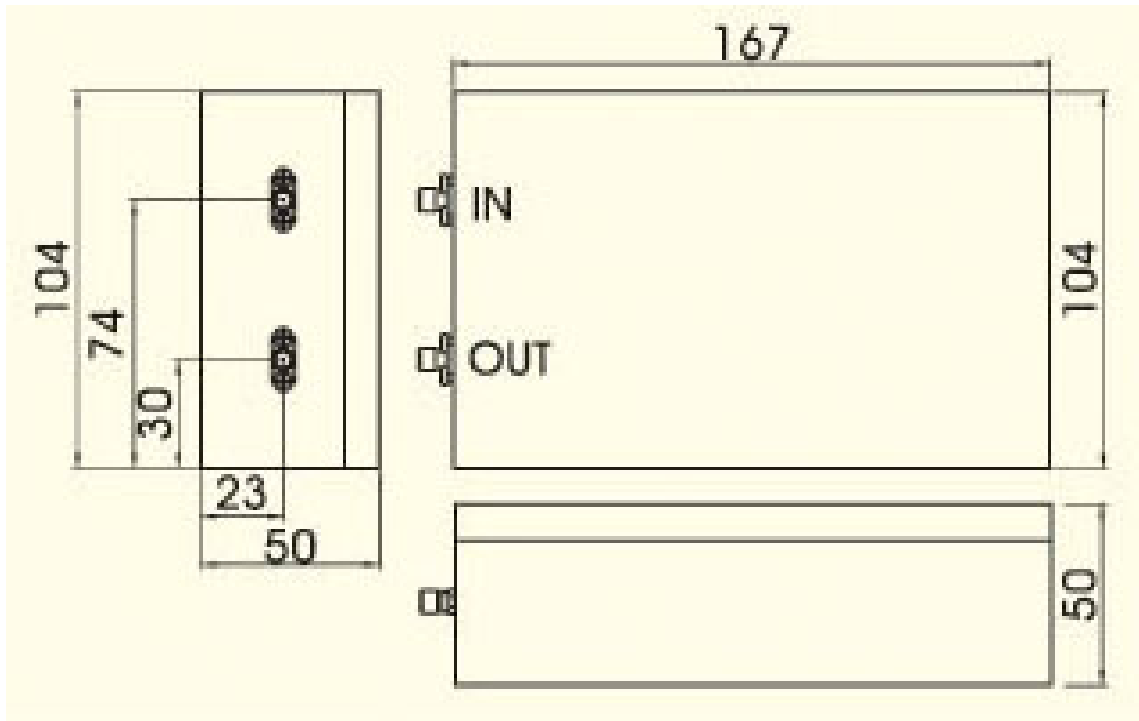
**P/N : SGC-B1970-20SS-HQR**



### BPF Specification

P/N : SGC-B1970-20SS-HQR	
Electrical Properties	
Parameter	
Frequency Range	1960 – 1980MHz
Pass Band Insertion Loss	1.5dB(Max)
Pass Band Return Loss	18dB(Max)
Pass Band Ripple	0.8dB(Max)
Attenuation(edge±3MHz)	25dB(Min) )
Attenuation(edge±5MHz)	50dB(Min) )
In/ Out Impedance	50Ω
Input Power Range	60W
Overall	
Tx Port Connectors	SMA-Type Female
Rx Port Connectors	SMA-Type Female
Relative Humidity	0 ~ 95%
Operating Temperature Range	-30℃ to +60℃
Size	167 × 104 × 50 (L × W × H) unit: mm

**Dimension : SGC-B1970-20SS-HQR**



**Diagram :SGC-B1970-20SS-HQR**

