

# SGC Technologies, Inc.

## PRODUCT SPECIFICATION FOR INFORMATION

PRODUCT NAME: SBP-3R3 TYPE

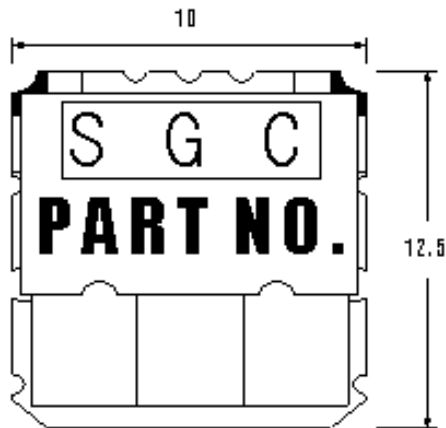
PART NO: SBP-3R3-881BP30M

Center frequency	881MHz
Pole	4
Bandwidth(BW)	Fo ±15 MHz
Insertion Loss	1.7 dB max
Return Loss	18 min
Ripple in BW	0.2 dB max
Attenuation	7dB (@ 849MHz) min
In/Out Impedance	50 ohm

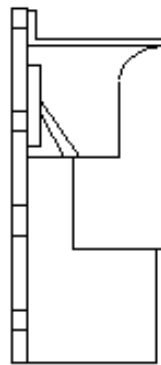
NOTE: EQUIPMENT used :HP 8753E

DIMENSION:

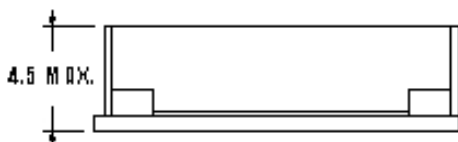
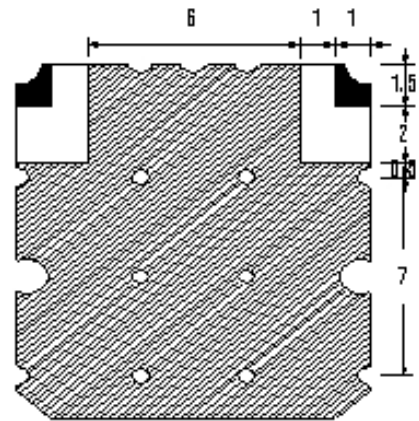
**TOP VIEW**



**SIDE VIEW**



**BOTTOM VIEW**



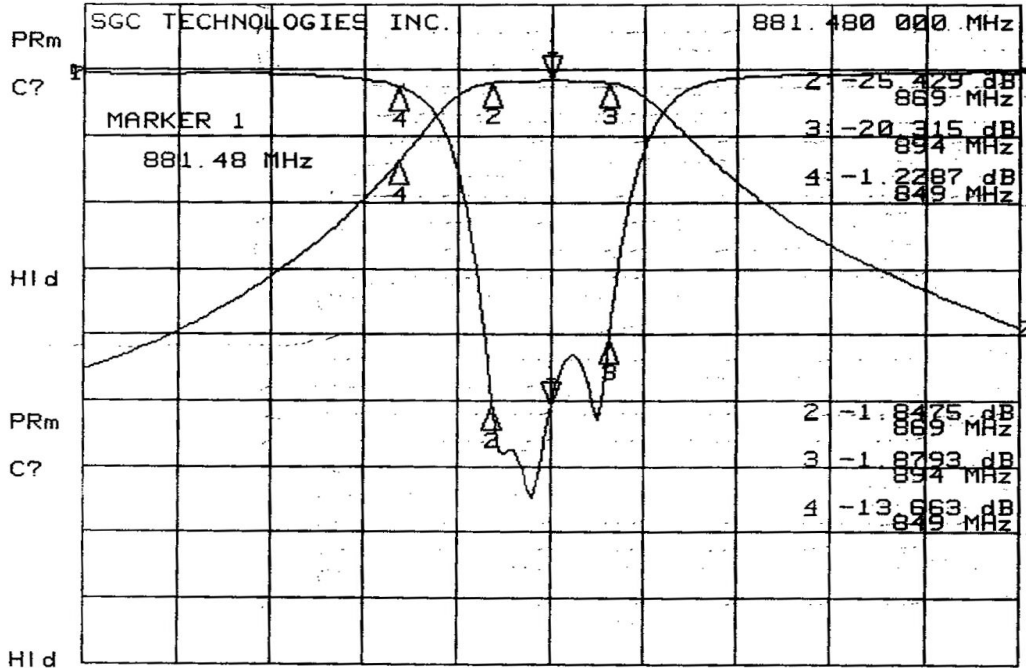
**TOLERANCE UNLESS  
OTHERWISE SPECIFIED : ±0.3  
DIMENSIONS : mm**

 **GROUND**  
 **I/O PORT**

# SBP-3R3-881BP30M

24 Feb 2000 15:48:37

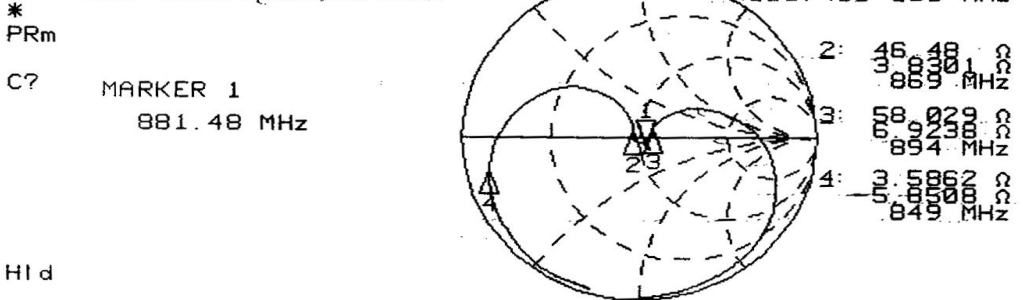
CH1 S<sub>11</sub> log MAG 5 dB/ REF 0 dB 1: -25.328 dB  
 CH2 S<sub>21</sub> log MAG 10 dB/ REF 0 dB 1: -1.5273 dB



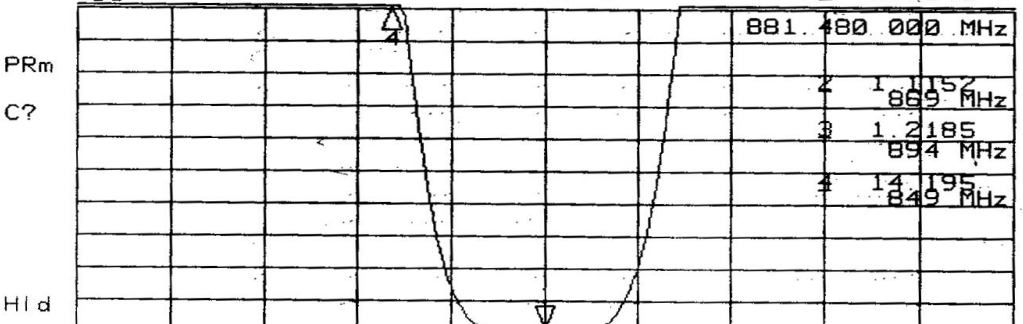
CENTER 881.500 000 MHz      SPAN 200.000 000 MHz

24 Feb 2000 15:49:05

CH1 S<sub>11</sub> 1 U FS 1: 53.402 Ω -4.4551 Ω 40.528 pF  
 \* SGC TECHNOLOGIES INC. 881.480 000 MHz



CH2 S<sub>11</sub> SWR 1 / REF 1 1 1.1145



CENTER 881.500 000 MHz      SPAN 200.000 000 MHz