

SGC Technologies, Inc.

PRODUCT SPECIFICATION FOR INFORMATION

PRODUCT NAME: SBP-6R6 TYPE

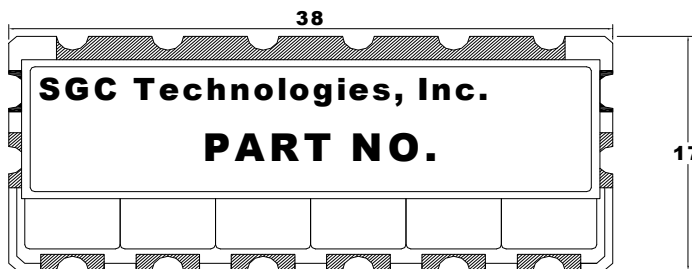
PART NO: SBP-6R6-1360BP40A

Center frequency	1360MHz
Pole	6
Bandwidth(BW)	Fo ±20 MHz
Insertion Loss	2.5 dB MAX
VSWR in BW	1.5 MIN
Ripple in BW	0.3 dB MAX
Attenuation	50dB min at Fo +/-108MHz
In/Out Impedance	50 ohm

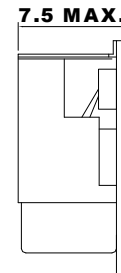
NOTE:

EQUIPMENT used :HP 8753E

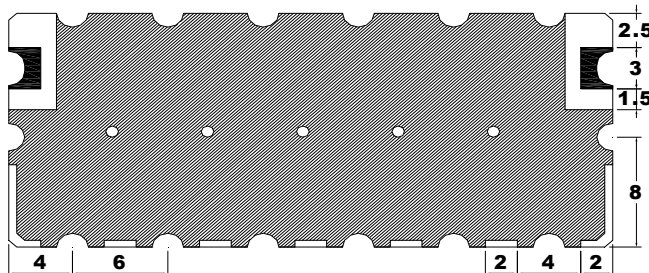
TOP VIEW



SIDE VIEW



BOTTOM VIEW

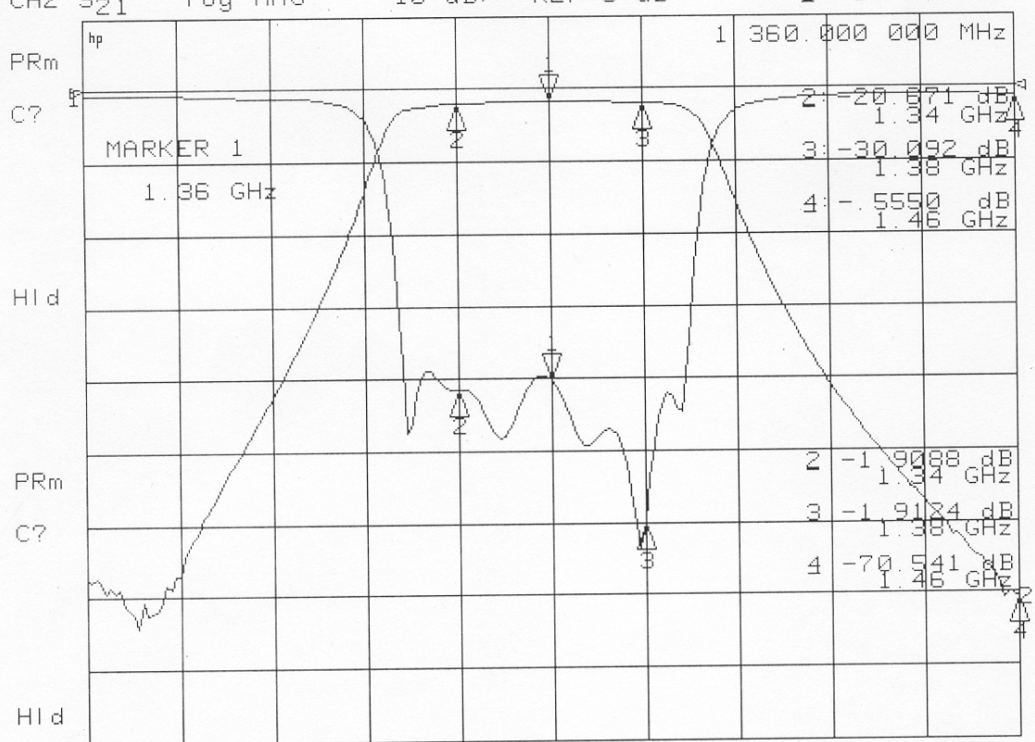


**TOLERANCE UNLESS
OTHERWISE SPECIFIED : ±0.3
DIMENSIONS : mm**

 **GROUND**
 **I/O PORT**

SBP-6R6-1360BP40A

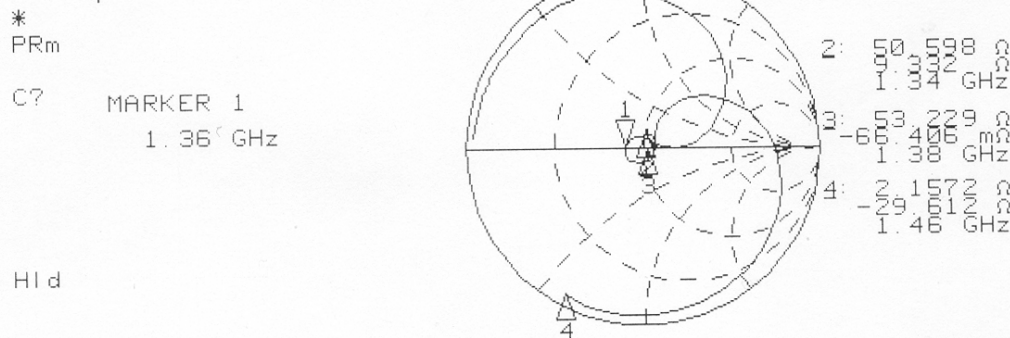
CH1 S₁₁ log MAG 5 dB/ REF 0 dB 1: -20.109 dB
 CH2 S₂₁ log MAG 10 dB/ REF 0 dB 1: -1.7749 dB



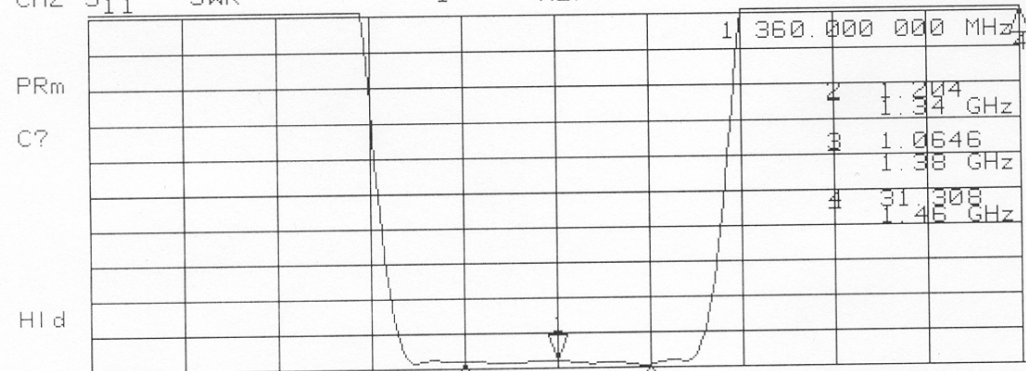
CENTER 1 360.000 000 MHz SPAN 200.000 000 MHz

26 Apr 2004 15:07:32

CH1 S₁₁ 1 U FS 1: 41.037 Ω 0.7168 Ω 83.884 pH
 hp 1 360.000 000 MHz



CH2 S₁₁ SWR 1 / REF 1 1 1.2191



CENTER 1 360.000 000 MHz SPAN 200.000 000 MHz