

SGC Technologies, Inc.

PRODUCT SPECIFICATION FOR INFORMATION

PRODUCT NAME: SDPX 8R8 TYPE

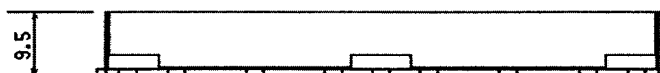
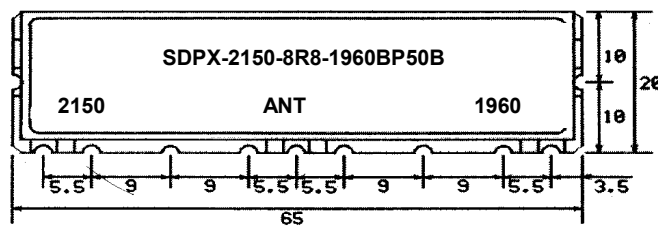
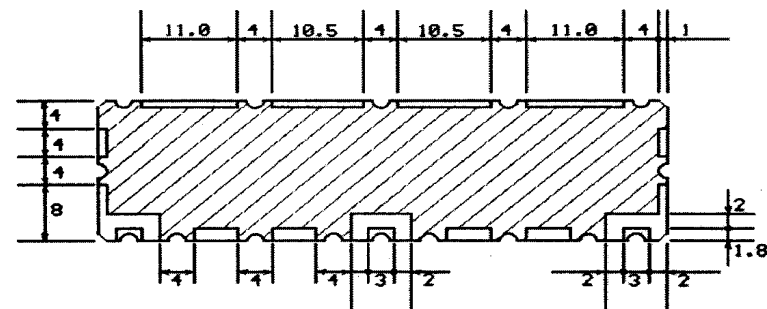
PART NO: SDPX-2150-8R8-1960BP50B

	RX	TX
Center frequency	1960 MHz	2150 MHz
Pole	8	
Bandwidth(BW)	$F_o \pm 25$ MHz	$F_o \pm 25$ MHz
Insertion Loss	2.0 dB max	2.0 dB max
VSWR in BW	1.4 max	1.4 max
Ripple in BW	0.5 dB max	0.5 dB max
Attenuation	50dB min at 2130~2170MHz	50dB min at 1940MHz-1980 MHz
In/Out Impedance	50 ohm	50 ohm
Operating Temp	-40°C to +70°C	
Relative Humidity	0~95 %	
PCB Material & T	FR4 & 1.0 T	

NOTE:

EQUIPMENT used :HP 8753E

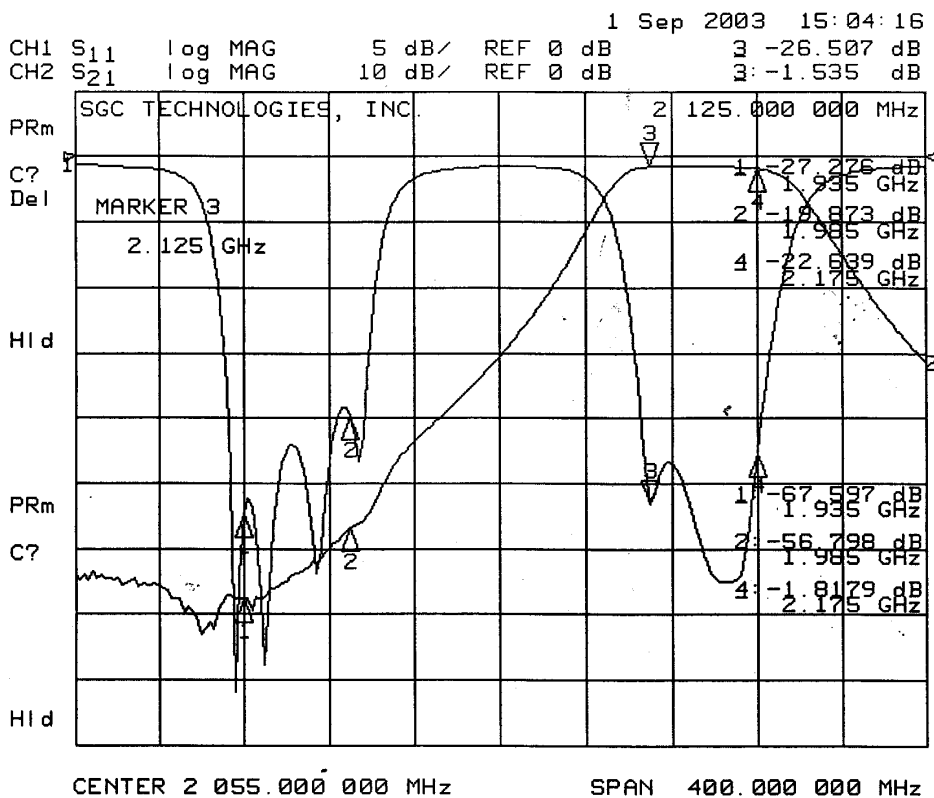
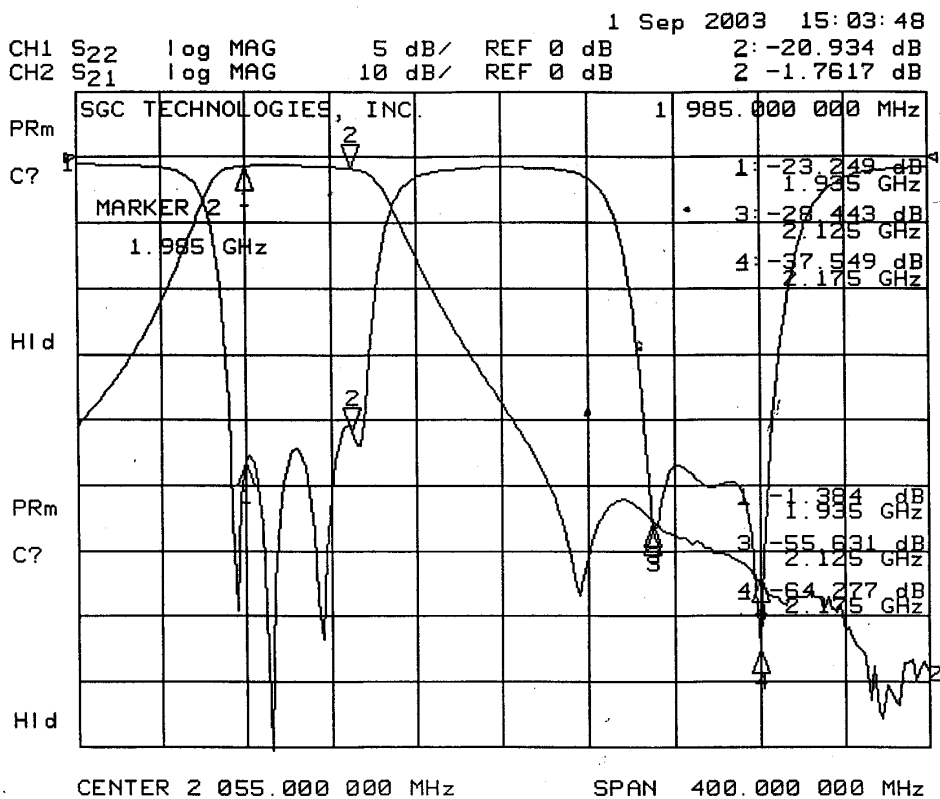
DIMENSION:



Unit : mm
Tolerance : +/-0.3
SGC Technologies Inc.

Graph

SDPX-2150-8R8-1960BP50B



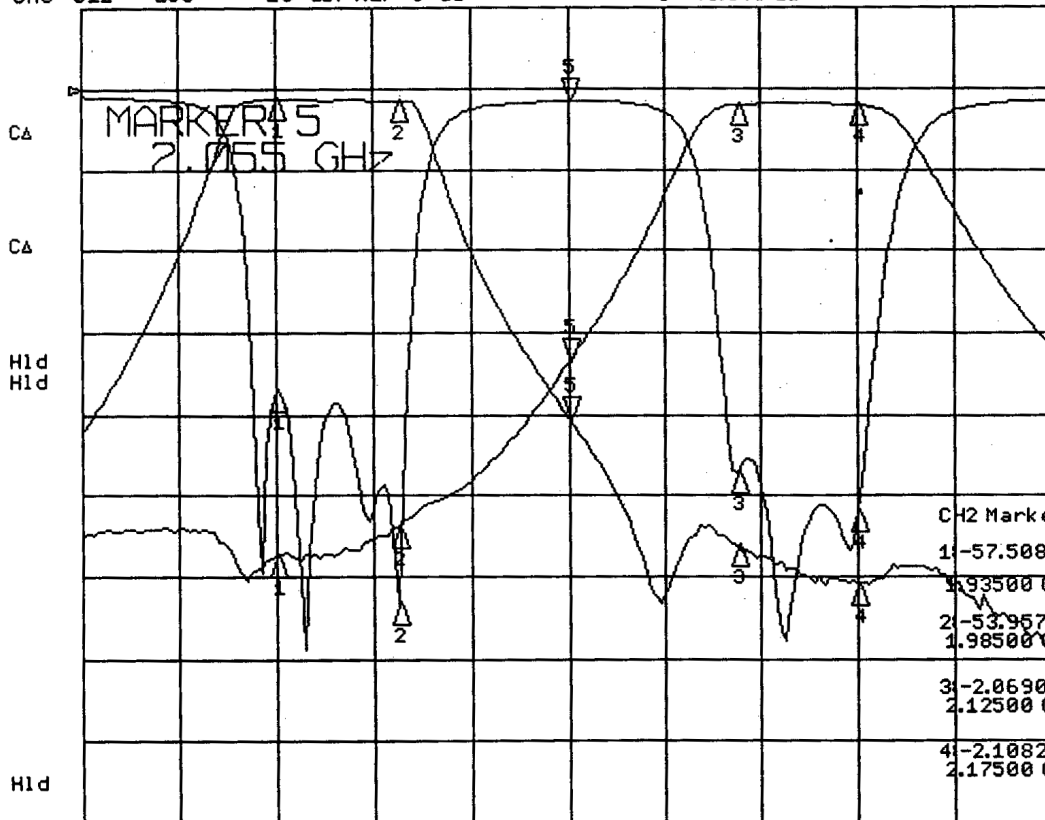
Graph-1

SDPX-2150-8R8-1960BP50B

24 Sep 2003 13:41:58

CH1 S11 LOG 5 dB/REF 0 dB
 CH2 S31 LOG 10 dB/REF 0 dB
 CH3 S12 LOG 10 dB/REF 0 dB

5: -79.120 dB 2 055.000 000 MHz
 5: -33.572 dB
 5: -40.548 dB



CH1 Markers

- 1: -18.500 dB
1.93500 GHz
- 2: -31.615 dB
1.98500 GHz
- 3: -23.553 dB
2.12500 GHz
- 4: -26.022 dB
2.17500 GHz

CH2 Markers

- 1: -57.508 dB
1.93500 GHz
- 2: -53.967 dB
1.98500 GHz
- 3: -2.0690 dB
2.12500 GHz
- 4: -2.1082 dB
2.17500 GHz

CH3 Markers

- 1: -1.2521 dB
1.93500 GHz
- 2: -1.5641 dB
1.98500 GHz
- 3: -56.186 dB
2.12500 GHz
- 4: -61.087 dB
2.17500 GHz

CH1/CH3 CENTER 2 055.000 000 MHz
 CH2 CENTER 2 055.000 000 MHz

SPAN 400.000 000 MHz
 SPAN 400.000 000 MHz