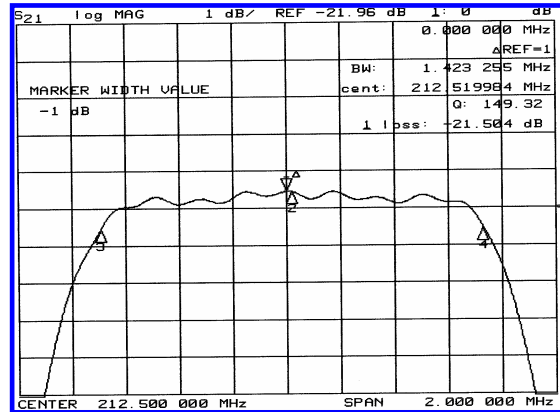
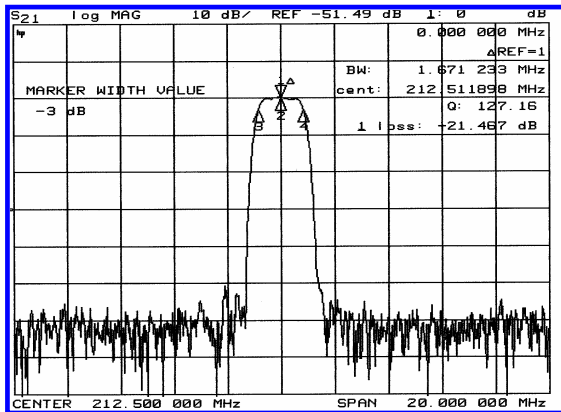


SGC Technologies Inc 212.5 MHz Bandpass Filter 1.6 MHz Bandwidth

313135

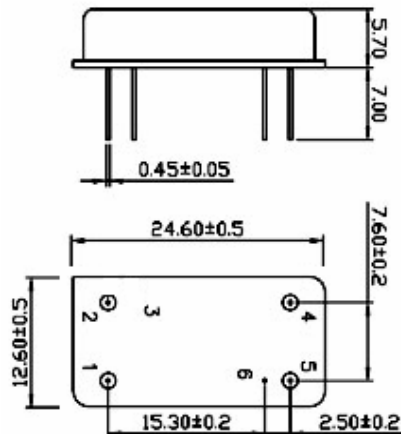
Typical Performance



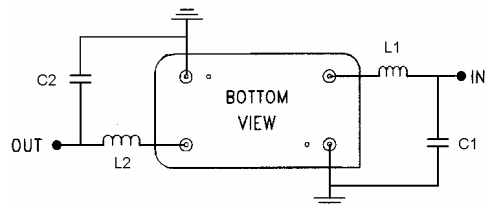
Specification

| Parameter | Unit | Min. | Typ. | Max. |
|-------------------------|--------|--------|--------|--------|
| Center Frequency | Mhz | 212.42 | 212.50 | 212.58 |
| Insertion Loss | dB | - | 21.5 | 22.5 |
| 1dB Bandwidth | Mhz | 1.40 | 1.42 | - |
| 3dB Bandwidth | Mhz | 1.60 | 1.67 | - |
| 40dB Bandwidth | Mhz | - | 2.54 | 2.65 |
| Passband Ripple | dB | - | 0.45 | 0.80 |
| Group Delay Variation | nsec | - | 150 | 200 |
| Absolute Delay | µsec | - | 3.0 | - |
| Ultimate Attenuation | DB | 50 | 55 | - |
| Substrate Material | - | Quartz | | |
| Temperature Coefficient | ppm/°C | -0.03 | | |

Package Dimension



Matching Configuration



L1=47nH, L2=33nH, C1=15pF, C2=24pF
Source / Load Impedance = 50Ω
Ambient Temperature = 25°C

02/05/2004